

FLUKE®

1625-2 Earth/Ground Tester

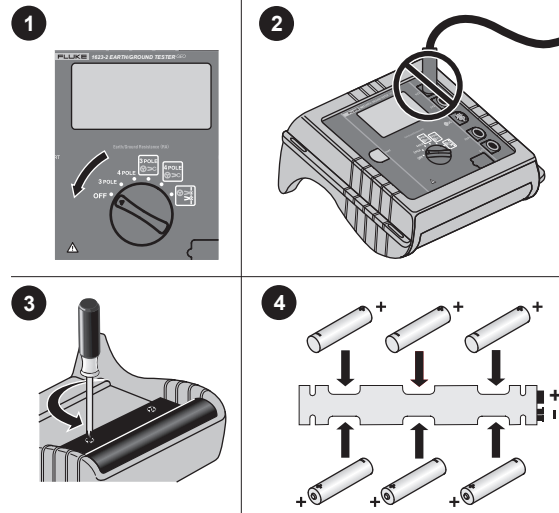
Quick Reference Guide



To prevent possible electrical shock, fire, or personal injury, read the "1623-2/1625-2 Safety Information" before you use this Product.

Go to www.fluke.com to register your product, download manuals, and find more information.

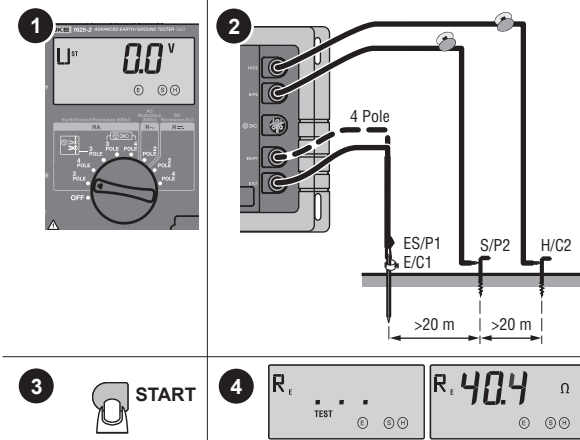
Batteries



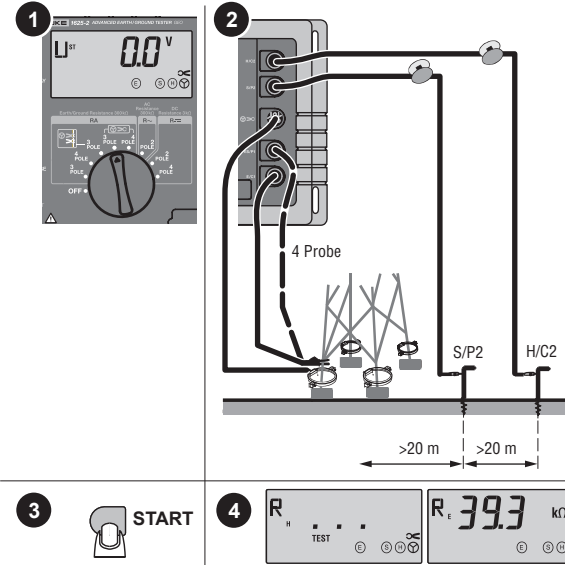
PN 4325438 January 2014
© 2014 Fluke Corporation. All rights reserved. All product names are trademarks of their respective companies.

Measurement

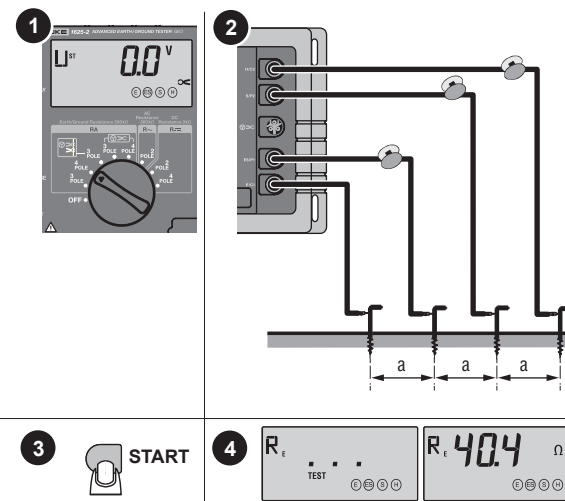
3-Pole/4-Pole Measurement of Earthing Resistance



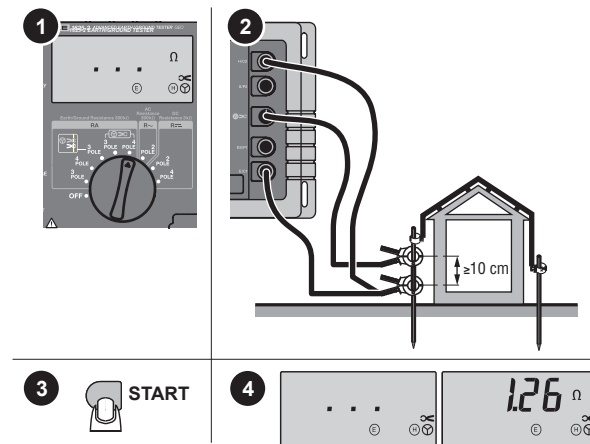
3-Pole/4-Pole Earthing Resistance without Disengaging the Overhead Earth Wire



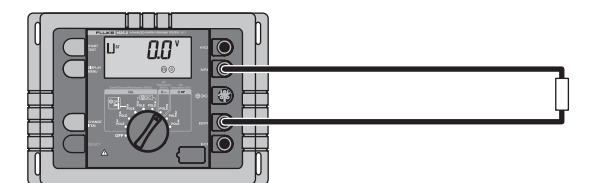
4-Pole Soil Resistivity



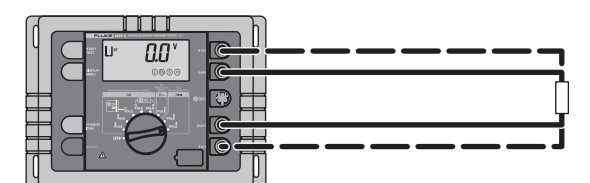
Stakeless Ground Loop Measurement



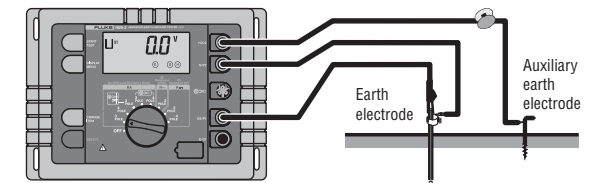
2-Pole/4-Pole Resistance (R~)



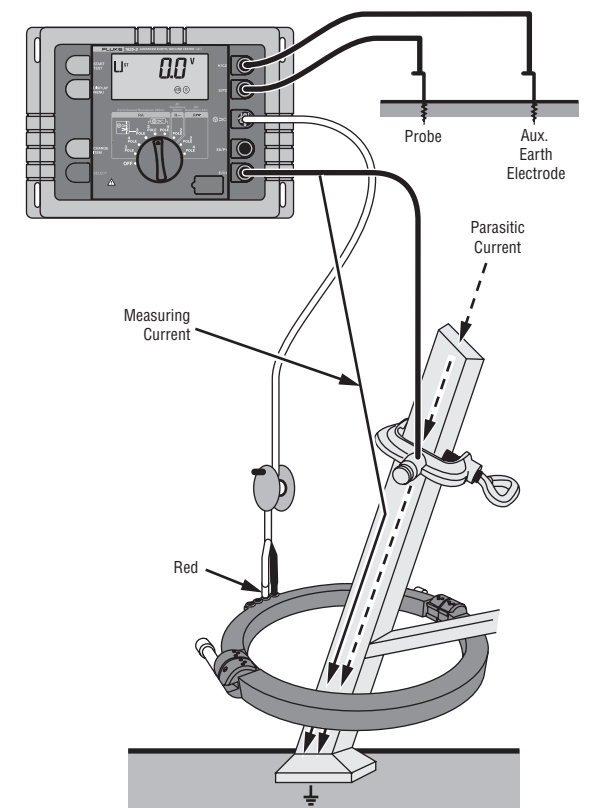
2-Pole Resistance (R---)



Compensation of Earth Electrode Connecting Lead



External Current Transformer



Zero Test Leads (All 2-Pole/3-Pole Types)

