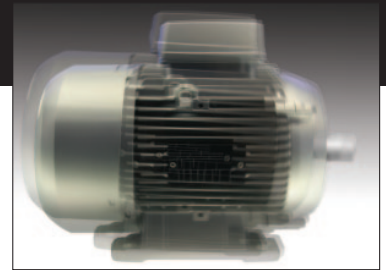


# Fluke redefines mechanical troubleshooting.



For years, technicians struggled to decipher machine vibration—an early sign of mechanical trouble—using a dowel, a screwdriver, or a stethoscope. Their only alternative was to turn to expensive consultants, complex vibration analysis tools, or full Predictive Maintenance programs that take time, money, and manpower to implement. Many maintenance teams simply need fast and actionable answers.

**The new Fluke 810 is the most advanced troubleshooting tool for mechanical maintenance teams who need an answer now.**

This new troubleshooting tool:

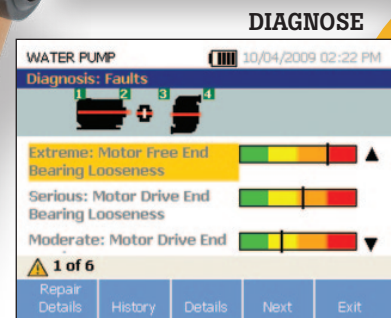
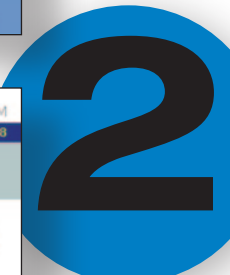
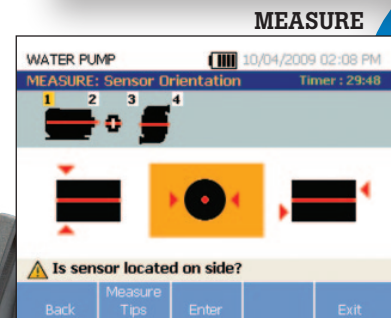
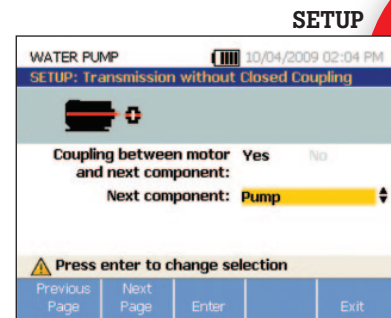
- **Analyzes common equipment** – like motors, fans and blowers, belts and chain drives, gearboxes, pumps, compressors and spindles.
- **Detects the root causes and locations of mechanical failures** – bearing problems, misalignment, unbalance and looseness, the most common mechanical problems facilities face.
- **Gives an immediate fault severity assessment** and repair recommendations.
- **Helps technicians quickly understand machine health** and set repair priorities so they can work more efficiently and effectively.
- **Helps managers control unplanned downtime** by anticipating problems early, eliminating recurring problems, and manage resources. It also bridges the skills gap by capturing decades of mechanical experience in one tool.

**Troubleshooting machines is now a simple 3-step process**

Fluke 810's unique design and intuitive user interface make testing machine vibration much easier than it has ever been.

- 1. Setup:** Technicians enter basic machine information like RPM and horsepower. The on-board Info feature gives field tips for setting up and taking measurements like a pro.
- 2. Measure:** The tester can be used to quickly troubleshoot problems on the spot, or monitor machine conditions.
- 3. Diagnose:** With a press of a button, the Fluke 810 identifies the root cause, its location and the problem's severity.

For more information, visit us at [www.fluke.com/machine-health](http://www.fluke.com/machine-health). Fluke has made an evolutionary leap in everyday mechanical maintenance.



# Quickly understand machine health and condition severity.

**Intuitive user interface** is multi-lingual and icon-based so you can use the Fluke 810 right out of the box

**Tri-axial TEDS accelerometer** reduces measurement time

**Laser Tachometer included** for accurate machine running speed and diagnostic confidence

**Fault severity scale** helps you set repair priorities

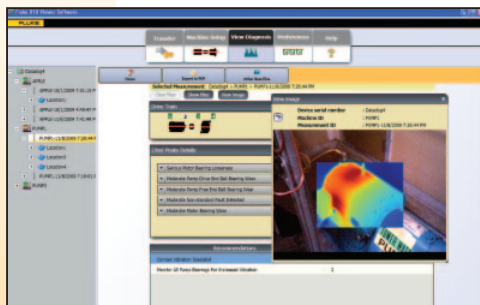


**New Fluke 810 Vibration Tester for everyday mechanical maintenance.**

**Repair recommendations** advise technicians on corrective action

**On-board diagnostic engine** identifies four common faults: misalignment, unbalance, looseness and bearing condition

**On-board context-sensitive help** for real-time tips and guidance



**Viewer PC Software** expands data storage and tracking capacity and imports Fluke thermal images

**Fluke.** *Keeping your world up and running.®*

**Fluke Corporation**  
PO Box 9090, Everett, WA 98206 U.S.A.

**Fluke Europe B.V.**  
PO Box 1186, 5602 BD Eindhoven, The Netherlands

**For more information call:**  
In the U.S.A. (800) 443-5853 or Fax (425) 446-5116  
In Europe/M-East/Africa +31 (0) 40 2675 200 or Fax +31 (0) 40 2675 222  
In Canada (800)-36-FLUKE or Fax (905) 890-6866  
From other countries +1 (425) 446-5500 or Fax +1 (425) 446-5116  
Web access: <http://www.fluke.com>

©2010-2011 Fluke Corporation.  
Specifications subject to change without notice.  
Printed in U.S.A. 3/2011 3620818C B-EN-N

**Modification of this document is not permitted without written permission from Fluke Corporation.**