

NMP830 SERIES MICRO DIAPHRAGM GAS PUMPS



NMP830KNDC



NMP830KNDC-B



NMP830KNDC-B customized

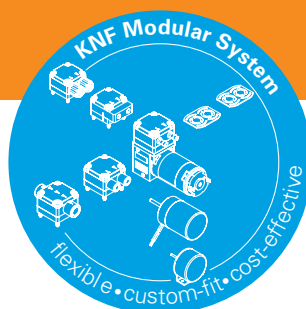
ADVANTAGES

- Customizing available
- Tested to customers specs
- High performance to size, efficiency and weight ratio
- Excellent reliability/durability
- Speed controllable
- Low sound level
- Long service life
- Uncontaminated transfer
- Maintenance-free
- High chemical resistance
- Can be installed in any position

POSSIBLE AREAS OF USE

- Medical devices
- Analytical equipment
- Emission measurement
- Reprographic
- Degassing
- Safety/Security
- Portable devices

Please visit our website
www.knf.com
to get more information.



PERFORMANCE DATA

Series Model	NMP830														
Material design	KNDC			KVDC			KTDC			KNDC-B		KVDC-B		KTDC-B	
Pump head	PPS														
Diaphragm	EPDM			FKM			PTFE coated			EPDM		FKM		PTFE coated	
Valves	CR			FKM			FFKM			CR		FKM		FFKM	
Flow rate at atm. pressure (l/min)	3.3	3	3.1	2.9	2.6	2.7	2.8	2.5	2.6	2.5	2.5	2.2	2.2	2.1	2.1
Ultimate vacuum (mbar abs.)	250	250	250	250	250	250	350	350	350	250	250	250	250	350	350
Ultimate pressure (bar rel)	1.4	1.4	1.4	1.2	1.2	1.2	1	1	1	1.4	1.4	1.2	1.2	1.2	1.2
Permissible media and ambient temperature (°C/°F)	+5° C to +40° C / 41° F to 104° F (-20° C to +60° C / -4° F to 140° F on request)														
Weight (g/oz)	195/6.88			195/6.88			195/6.88			270/9.52		270/9.52		270/9.52	

ELECTRICAL DATA

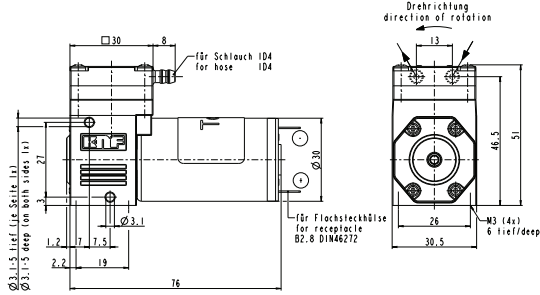
Voltage (V)	6	12	24	6	12	24	6	12	24	12	24	12	24	12	24
Motor	DC			DC			DC			Brushless DC					
I _{max} (A)	1	0.5	0.25	1	0.5	0.25	1	0.5	0.25	0.5	0.26	0.5	0.26	0.5	0.26

NMP830KNDC

PERFORMANCE DATA

Series model	Flow rate at atm. pressure (l/min)	Max. operating pressure (bar rel)	Ultimate vacuum (mbar abs.)
NMP830KNDC 6V	3.3	1.4	250
NMP830KNDC 12V	3	1.4	250
NMP830KNDC 24V	3.1	1.4	250

NMP830KNDC



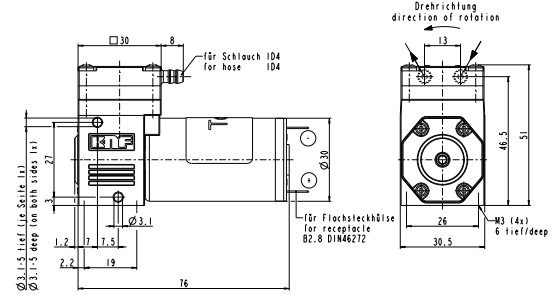
Dimensions in mm

NMP830KVDC

PERFORMANCE DATA

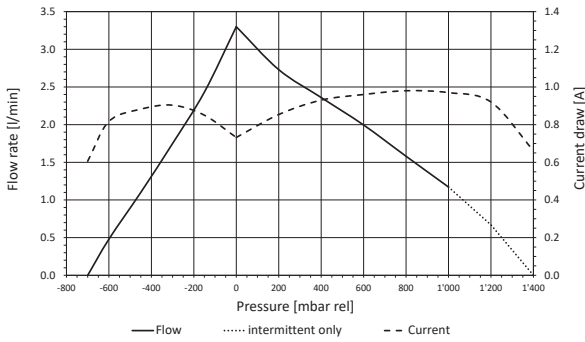
Series model	Flow rate at atm. pressure (l/min)	Max. operating pressure (bar rel)	Ultimate vacuum (mbar abs.)
NMP830KVDC 6V	2.9	1.2	250
NMP830KVDC 12V	2.6	1.2	250
NMP830KVDC 24V	2.7	1.2	250

NMP830KVDC

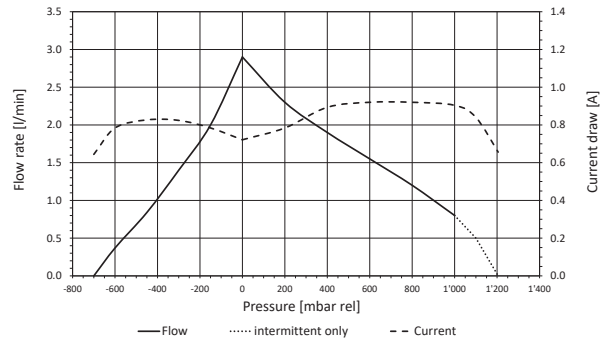


Dimensions in mm

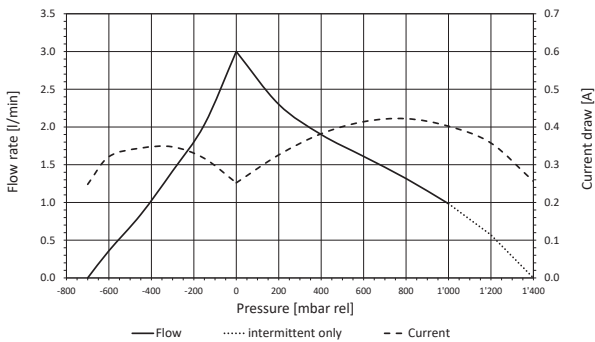
NMP830KNDC 6V FLOW CURVE



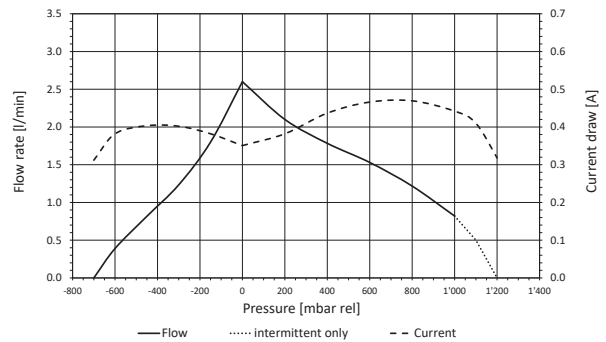
NMP830KVDC 6V FLOW CURVE



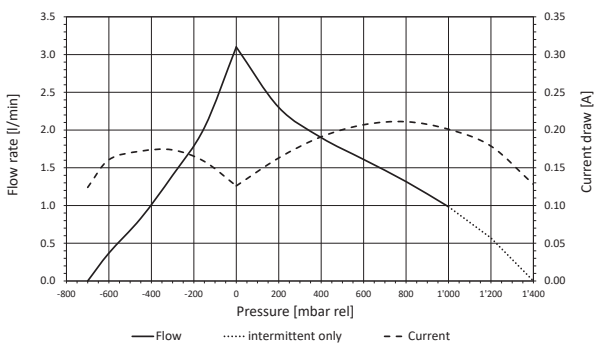
NMP830KNDC 12V FLOW CURVE



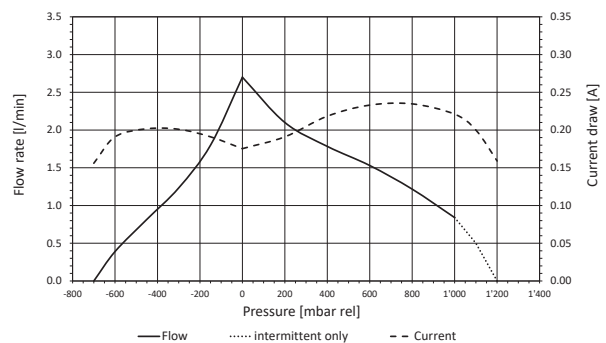
NMP830KVDC 12V FLOW CURVE



NMP830KNDC 24V FLOW CURVE



NMP830KVDC 24V FLOW CURVE

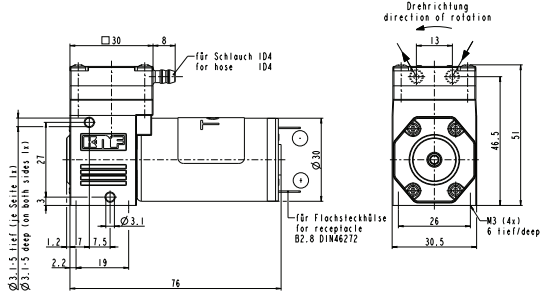


NMP830KTDC

PERFORMANCE DATA

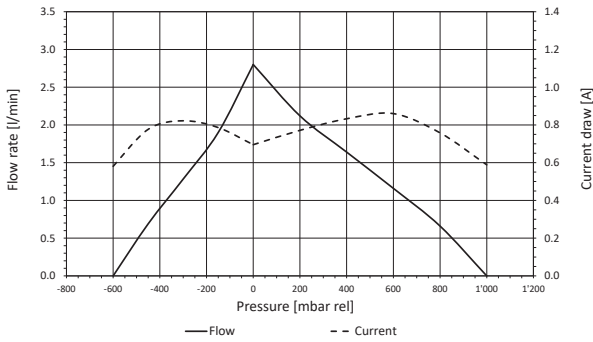
Series model	Flow rate at atm. pressure (l/min)	Max. operating pressure (bar rel)	Ultimate vacuum (mbar abs.)
NMP830KTDC 6V	2.8	1	350
NMP830KTDC 12V	2.5	1	350
NMP830KTDC 24V	2.6	1	350

NMP830KTDC



Dimensions in mm

NMP830KTDC 6V FLOW CURVE

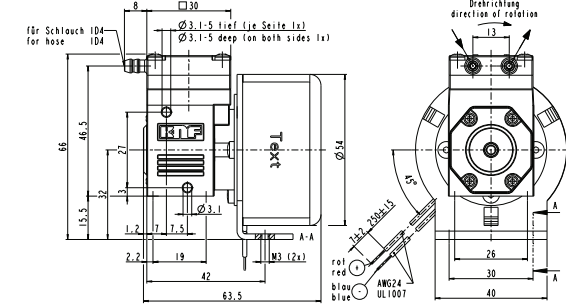


NMP830KNDC-B

PERFORMANCE DATA

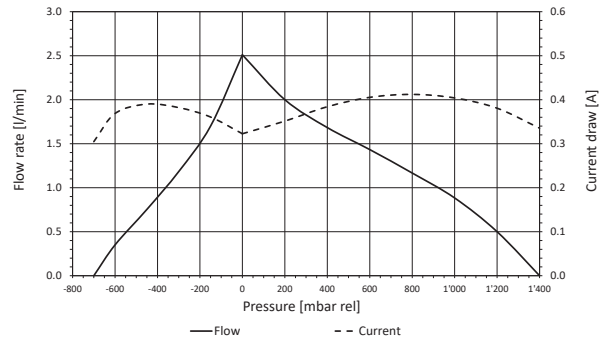
Series model	Flow rate at atm. pressure (l/min)	Max. operating pressure (bar rel)	Ultimate vacuum (mbar abs.)
NMP830KNDC-B 12V	2.5	1.4	250
NMP830KNDC-B 24V	2.5	1.4	250

NMP830KNDC-B

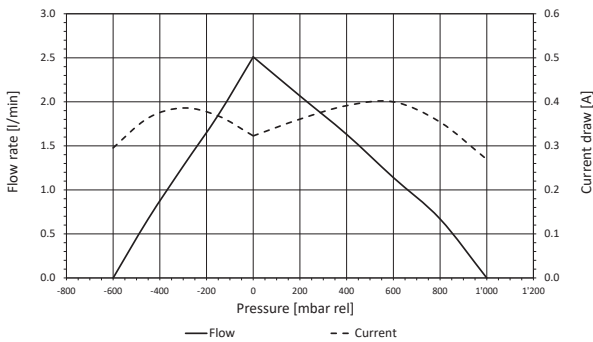


Dimensions in mm

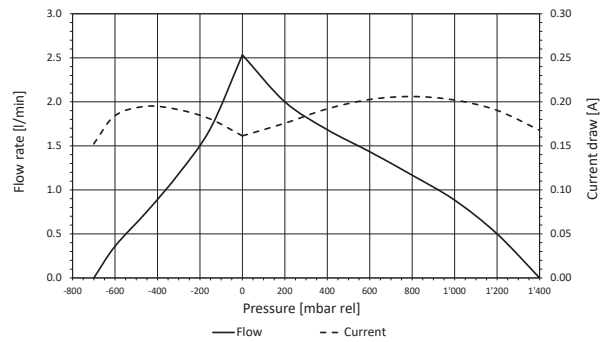
NMP830KNDC-B 12V FLOW CURVE



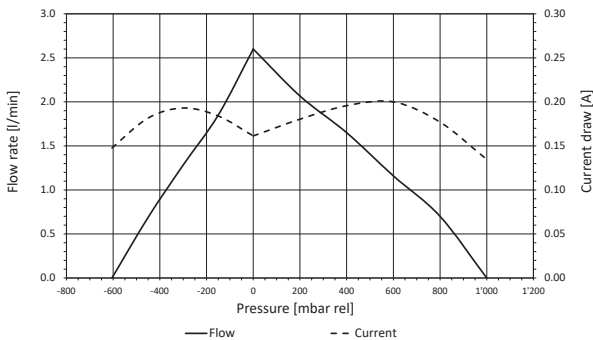
NMP830KTDC 12V FLOW CURVE



NMP830KNDC-B 24V FLOW CURVE



NMP830KTDC 24V FLOW CURVE

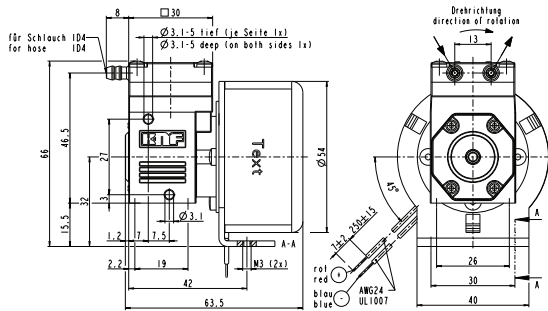


NMP830KVDC-B

PERFORMANCE DATA

Series model	Flow rate at atm. pressure (l/min)	Max. operating pressure (bar rel)	Ultimate vacuum (mbar abs.)
NMP830KVDC-B 12V	2.2	1.2	250
NMP830KVDC-B 24V	2.2	1.2	250

NMP830KVDC-B



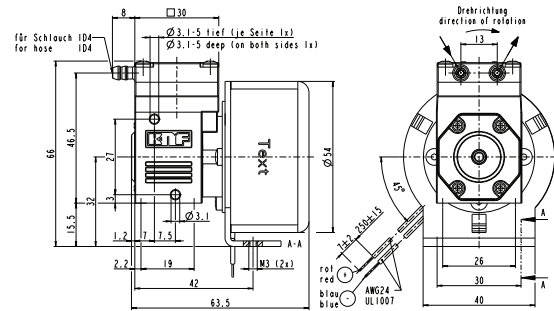
Dimensions in mm

NMP830KTDC-B

PERFORMANCE DATA

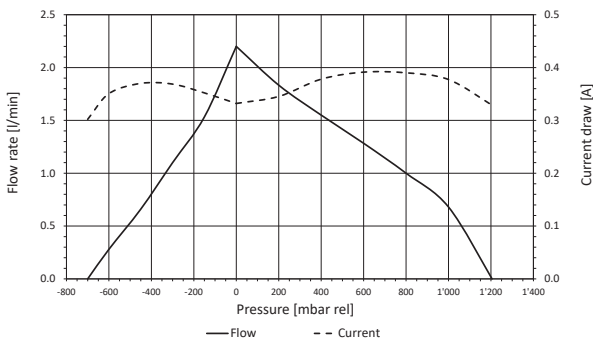
Series model	Flow rate at atm. pressure (l/min)	Max. operating pressure (bar rel)	Ultimate vacuum (mbar abs.)
NMP830KTDC-B 12V	2.1	1.2	350
NMP830KTDC-B 24V	2.1	1.2	350

NMP830KTDC-B

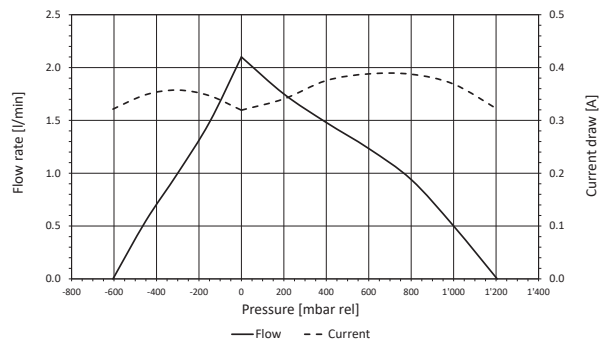


Dimensions in mm

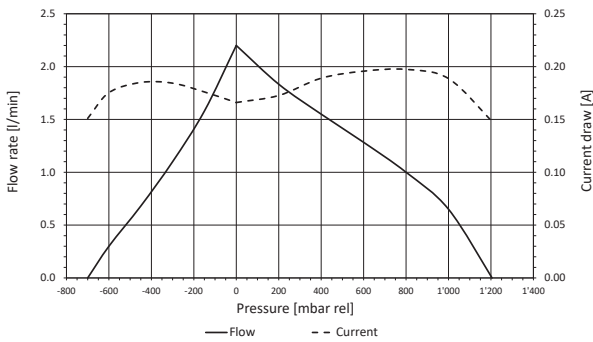
NMP830KVDC-B 12V FLOW CURVE



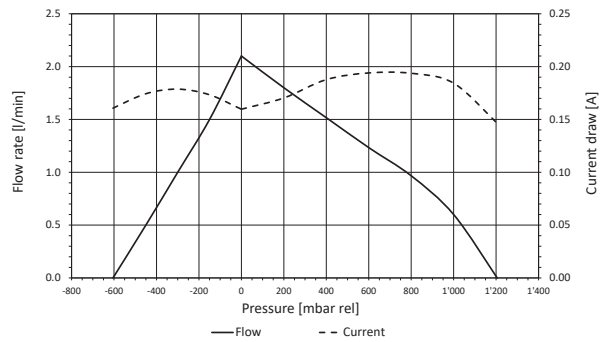
NMP830KTDC-B 12V FLOW CURVE







NMP830KVDC-B 24V FLOW CURVE



NMP830KTDC-B 24V FLOW CURVE



OPTIONS			
Description	Illustration	Part No.	Details
Motors			Other motor options are available. Ask your KNF sales contact to find the best solution for you.
Connecting plate			DN4/6 connecting plate M5 inside thread UNF 1/4".-28 inside thread
Eccentric			Other eccentricities are available to meet your operating point best.

ACCESSORIES			
Description	Illustration	Part No.	Details
Silencer		024805	For hose barbs
Silencer		314005	For DN4/6 connecting plate
Mounting plate		162405	Hole distance 43 x 22 mm. Inner diameter of the sleeve is 3.5 mm, screws are not included.
Rubber-bonded metal		On request	

SPARE PARTS			
Description	Illustration	Part No.	Details
Spare part kit for KP version NMP830KN NMP830KV NMP830KT		120804 120805 120806	One kit per head containing valve, O-Ring and Diaphragm. For a double head pump two kits are required.

The performance values for the series models shown on this data sheet were determined under test conditions. The actual performance values may differ and depend in particular on the usage conditions and therefore on the specific application, on the parameters of the components involved in the user's system and on any technical modifications carried out which deviate from the standard configuration or the as delivered condition.

If individual designs have been created for specific customers on the basis of series models, other technical performance data may apply. Before operation begins, the relevant operating instructions and/or assembly or installation instructions should be read and the safety information contained in these instructions should be noted. KNF reserves the right to make changes to the product and the associated documentation without prior notice to the customer.



www.knf.com

YOUR LOCAL PARTNER AROUND THE WORLD

KNF SALES ORGANIZATION

Australia KNF Regional Office
Moreland West VIC 3055
Tel. +61 3 9386 4959
info@knf.com.au
www.knf.com.au

Benelux Netherlands KNF Verder B.V.
3451 GG Vleuten
Tel. +31 30 677 92 40
info@knf-verder.nl
www.knf-verder.nl

Benelux Belgium and Luxemburg
KNF Verder N.V.
2630 Aartselaar
Tel. +32 3 871 96 24
info@knf.be
www.knf.be

China KNF Technology (Shanghai) Co., Ltd.
Shanghai 201203
Tel. +86 21 5109 9695
info@knf.com.cn
www.knf.com.cn

France KNF Neuberger SAS
68128 Village-Neuf
Tel. +33 389 70 35 00
info@knf.fr
www.knf.fr

Germany KNF Neuberger GmbH
79112 Freiburg
Tel. +49 7664 5909 0
info@knf.de
www.knf.de

India KNF Pumps + Systems (India) Pvt. Ltd.
Hinjewadi Pune 411 057
Tel. +91 20 640 13 923
info@knfpumps.in
www.knfpumps.in

Italy KNF Italia S.r.l.
20063 Cernusco s. Naviglio (MI)
Tel. +39 02 929 04 91
info@knf.it
www.knf.it

Japan KNF Japan Co. Ltd.
Tokyo 104-0033
Tel. +81 3 3551 7931
info@knf.co.jp
www.knf.co.jp

Korea KNF Neuberger Ltd.
135-502 Seoul
Tel. +82 2 959 0255
knf@knfkorea.com
www.knfkorea.com

Latin America KNF Regional Office
Tel. +1 609 649 1010
gb@knf.com
www.knf.com/es

Morocco, Tunisia, Algeria
KNF Neuberger SAS
68128 Village-Neuf
Tel. +33 389 70 35 00
info@knf.fr
www.knf.fr

Singapore KNF Regional Office
Tel. +65 9722 1994
info@knf.com.sg
www.knf.com.sg

Sweden, Finland, Denmark, Norway
KNF Neuberger AB
117 43 Stockholm
Tel. +46 8 744 51 13
info@knf.se
www.knf.se

Switzerland KNF Neuberger AG
8362 Balzerswil
Tel. +41 71 973 99 30
knf@knf.ch
www.knf.ch

UK, Ireland KNF Neuberger U.K., Ltd.
Witney, Oxfordshire OX28 4FA
Tel. +44 1993 77 83 73
info@knf.co.uk
www.knf.co.uk

USA, Canada KNF Neuberger, Inc.
Trenton, NJ 08691-1810
Tel. +1 609 890 8600
knfusa@knf.com
www.knfusa.com

KNF PRODUCT CENTERS

Gas Pumps KNF Neuberger GmbH
DE-79112 Freiburg
info@knf.de
www.knf.de

Micro Gas Pumps KNF Micro AG
CH-6260 Reiden
info@knf-micro.ch
www.knf-micro.ch

Liquid Pumps KNF Flodos AG
CH-6210 Sursee
info@knf-flodos.ch
www.knf-flodos.ch